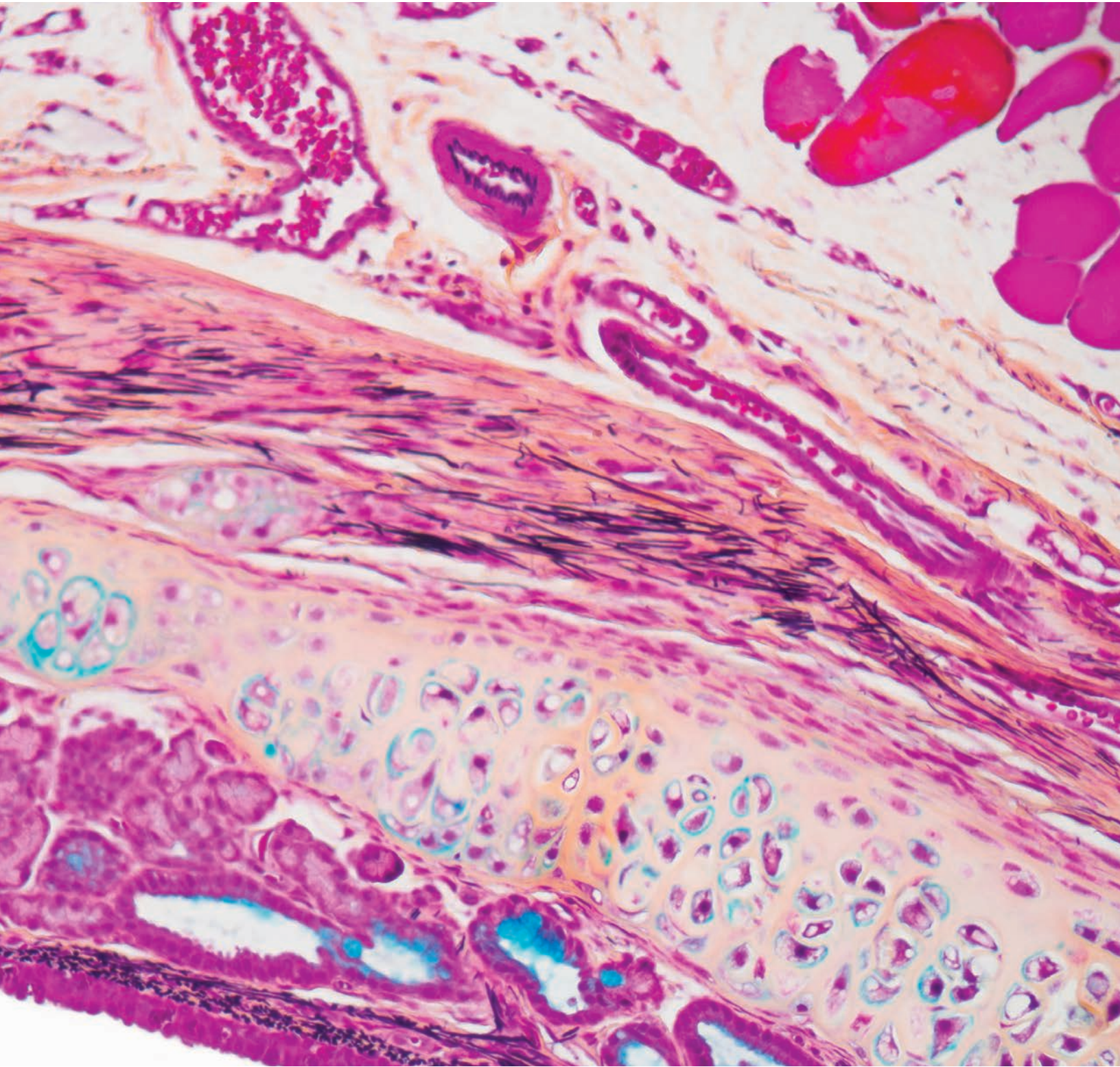


# STAIN KITS



NEWCOMEN  SUPPLY®

# ABOUT US & ORDERING INFORMATION

## Mission

**Keeping it real:** Our job is to help you get your job done! Everything we do is designed with your needs out front. Our goal is to make sure your goals are met.

**Keeping the lines of communication open:** Our technical support staff is ready to help you solve problems, resolve concerns, and make sure that your procedures run as smoothly as possible.

**Keeping prices competitive:** We take pride in making sure our products arrive at your lab with the fairest price possible.

**Keeping a sense of humor:** Life is Good! Don't forget that. We won't. If you're having a bad day, don't worry, it's our joy to make sure your day is full of *HISTOCALIFRAGILISTICXPALIDOCIOUS!*

## PLACING AN ORDER

To place an order contact customer service at your earliest convenience by phone, fax, mail, or email. Our helpful staff is available and ready to help you find the histology products you need. To see our most current product listings, please visit our website at [www.newcomersupply.com](http://www.newcomersupply.com).

<b>Phone</b>	1-800-383-7799 Monday through Friday 8 a.m. to 5 p.m. CST
<b>Fax</b>	1-608-831-0866
<b>Email</b>	<a href="mailto:orders@newcomersupply.com">orders@newcomersupply.com</a>
<b>Mail</b>	Newcomer Supply Inc. Attn: Customer Service 2505 Parview Road Middleton, WI 53562

"There are two ways to live your life. One is as though nothing is a miracle. The other is as though everything is a miracle." -Albert Einstein

We work hard to bring you the best histology supply services available. Please call 800-383-7799 or e-mail [info@newcomersupply.com](mailto:info@newcomersupply.com) anytime with any questions or comments.





# ABOUT OUR STAIN KITS & TABLE OF CONTENTS

## USAGE

All Newcomer Supply Stain Kits are designed to be used with 50ml Coplin jars filled to 40ml. Follow the staining procedure provided in your kit. Some solutions may contain extra volumes.

250ml is sufficient for 6 staining runs.

500ml is sufficient for 12 staining runs.

## PROCEDURE

All stain kits will include a Technical Memo and SDS. The Technical Memo includes information on: application, method, staining procedure, results, procedure notes and references. Technical Memos and SDSs can also be found on our website.

## CONTROL SLIDES

Most Newcomer stain kits come with two complimentary unstained control slides to be used for the initial verification

of staining techniques and reagents. We suggest running one slide along with your in-house control slide for the first run.

Retain the second control slide for further troubleshooting, if needed.

## STORAGE

For storage temperature refer to component bottle labels.

## COMPONENTS

Components for many of our stain kits are available for purchase individually.

## KEY

H = Hazardous chemical shipping requirements and air shipment Hazardous Material Fee.

## CARBOHYDRATE STAINS

Alcian Blue 1%, pH 2.5	3
Alcian Blue/PAS	4
Colloidal Iron, Müller-Mowry	5
Mucin, Mayer Mucicarmine	9
Periodic Acid Schiff (PAS)	9

## CONNECTIVE TISSUE AND MUSCLE FIBER STAINS

Basement Membrane, Gomori	4
Elastic, Verhoeff	6
Movat-Russell Modified Pentachrome	8
Phosphotungstic Acid Hematoxylin (PTAH)	9
Reticulum, Gordon & Sweets	9
Trichrome, Gomori One-Step, Aniline Blue	10
Trichrome, Gomori One-Step, Fast Green	10
Trichrome, Masson, Aniline Blue	11
Trichrome, Masson, Fast Green	11
Trichrome, McLetchie, Aniline Blue	11

## FAT STAIN

Fat, Oil Red O, Propylene Glycol	6
----------------------------------	---

## MICROORGANISM STAINS

AFB, Basic Fuchsin, Ellis & Zabrowarny	3
AFB, Fite	3
AFB, Ziehl-Neelsen	3
Differential	5
Fungus, Grocott Methenamine Silver (GMS)	6
Fungus, PAS/Light Green	7
Gram, Brown-Brenn Modified	7
Gram, Brown-Hopps	7
Gram, Hucker-Twort	7
Helicobacter, Toluidine Blue/Alcian Yellow	8
Steiner-Chapman Modified Silver	10
Steiner-Steiner Modified Silver	10

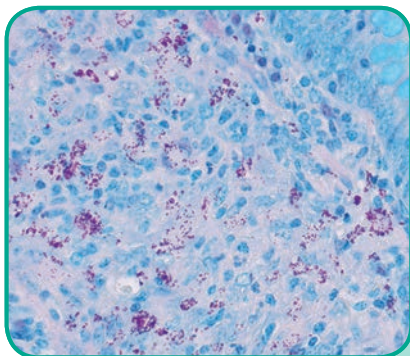
## NEUROLOGICAL STAINS

Bielschowsky, Lester-King Modified	5
Luxol Fast Blue (LFB)/Cresyl Violet	8

## PIGMENT, SUBSTANCE AND MINERAL STAINS

Amyloid, Bennhold Congo Red	4
Amyloid, Puchtler Congo Red	4
Copper, Rhodanine	5
Fontana Masson	6
Iron, Gomori Prussian Blue	8

# STAIN KITS

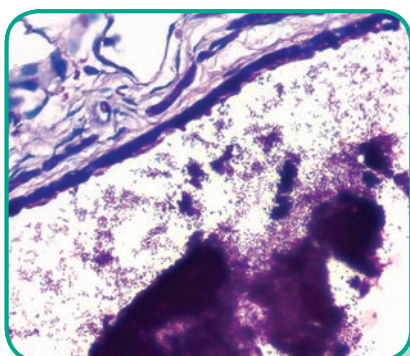


## AFB, Basic Fuchsin, Ellis & Zabrowarny Stain Kit

Stains acid-fast bacilli without the use of phenol. A surfactant substitution is made for phenol which renders the bacterial cell wall permeable to the stain. Results are comparable to the traditional Ziehl-Neelsen method.

Microwave Modification Included

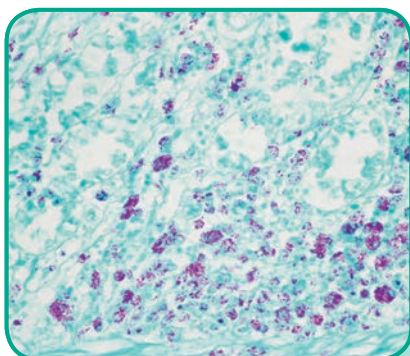
PART	VOLUME	
91012A	250ml	H



## AFB, Fite Stain Kit

Detects the presence of either Nocardia sp. or Mycobacterium leprae sp. (causative agent of leprosy) in tissue sections.

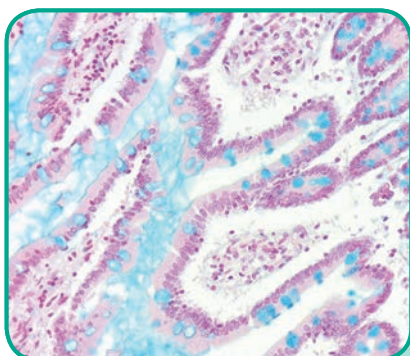
PART	VOLUME	
91013A	250ml	H



## AFB, Ziehl-Neelsen Stain Kit

Detects the presence of acid-fast mycobacteria in tissue sections. Carbol Fuchsin Stain, Ziehl-Neelson, combines phenol and basic fuchsin that works to permeate the lipoid capsule of acid-fast organisms and renders them resistant to acid alcohol decolorization.

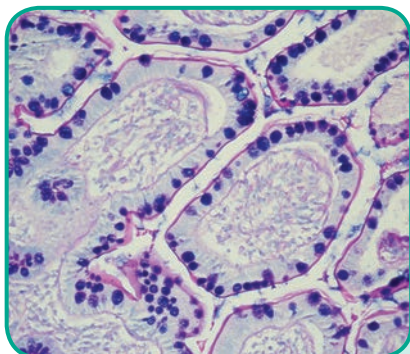
PART	VOLUME	
9101A	250ml	H



## Alcian Blue 1%, pH 2.5 Stain Kit

Stains acid epithelial mucin (sialomucin, sulfomucin) as well as stromal (mesenchymal) mucin. Hyaluronidase digestion step can be employed for further differentiation of acid epithelial from stromal mucin.

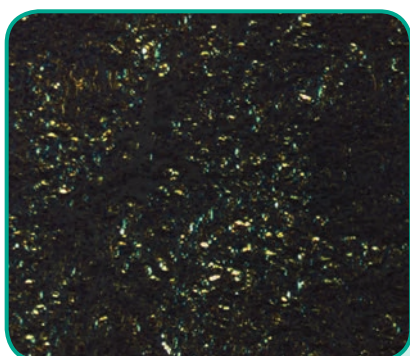
PART	VOLUME	
9102A	250ml	
9102B	500ml	



### Alcian Blue/PAS Stain Kit

Differentiates between acidic epithelial mucins (sialomucin, sulfomucin) and neutral epithelial mucin and is a means of detecting the overall presence of mucins. Acidic mucins are stained with the Alcian Blue technique while neutral mucins and glycogen are stained by the PAS reaction.

PART	VOLUME
91022A	250ml
91022B	500ml

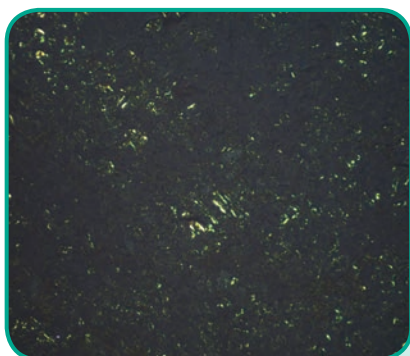


### Amyloid, Bennhold Congo Red Stain Kit

Identifies the extraneous protein deposits in amyloidosis. The use of polarizing lenses is the essential technique for visualizing amyloid positive areas and/or to confirm negativity.

Microwave Modification Included

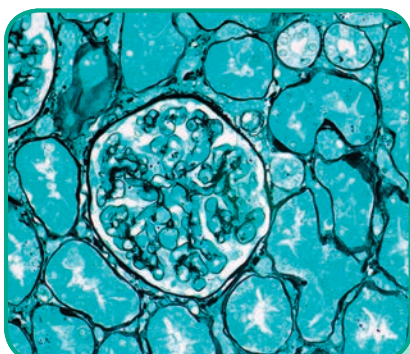
PART	VOLUME	
9103A	250ml	H



### Amyloid, Puchtler Congo Red Stain Kit

Identifies the extraneous protein deposits in amyloidosis. The use of polarizing lenses is the essential technique for visualizing amyloid positive areas and/or to confirm negativity.

PART	VOLUME	
9104A	250ml	H



### Basement Membrane, Gomori Stain Kit

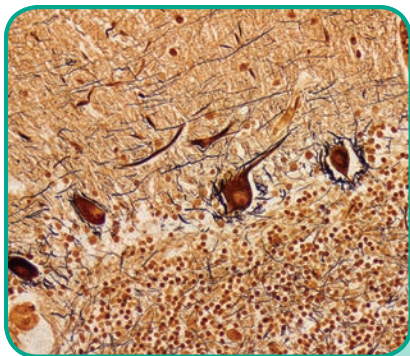
A straightforward silver technique similar to the Jones Method for identification of glomerular and tubular basement membranes in renal tissue.

Microwave Modification Included

PART	VOLUME
9167A	250ml



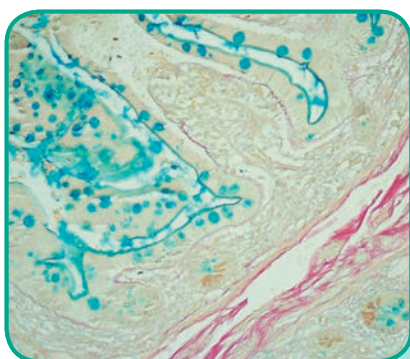
# STAIN KITS



## Bielschowsky, Lester-King Modified Stain Kit

Stains nerve fibers, neurofibrils/tangles, senile plaques and axons. Used in the diagnosis of Alzheimer's disease and other neurological disorders.

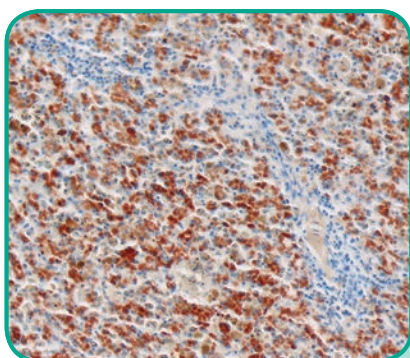
PART	VOLUME
9154A	250ml <span>H</span>



## Colloidal Iron, Müller-Mowry Stain Kit

Stains acid epithelial mucin (sialomucin, sulfomucin) and stromal (mesenchymal) mucin and also demonstrates encapsulated yeast *Cryptococcus neoformans*.

PART	VOLUME
9110A	250ml

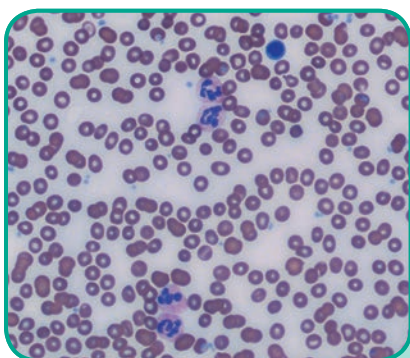


## Copper, Rhodanine Stain Kit

Used for the detection of copper and copper-associated protein (CAP) in tissue sections.

Microwave Modification Included

PART	VOLUME
9113A	250ml <span>H</span>

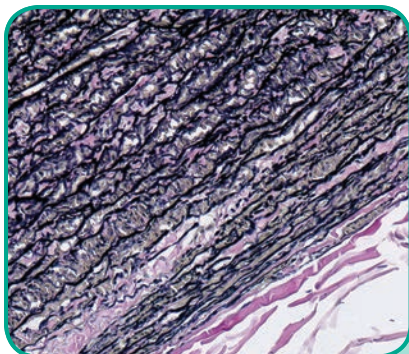


## Differential Stain Kit

Differential staining of peripheral blood smears, touch imprints, fine needle aspirations (FNA), bone marrow biopsy aspirations, as well as detecting *Helicobacter pylori* sp. in GI tissue. Can be used for smears, touch imprints and tissue sections. This is a modification of the Wright Giemsa Stain technique using aqueous based stain solutions and a methanol fixative. Procedures for both monochromatic and polychromatic versions of the Differential Stain are provided.

PART	VOLUME
9112B	500ml <span>H</span>

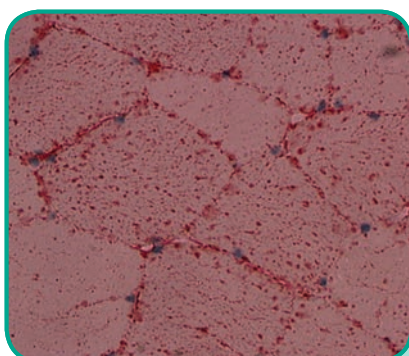
*Complimentary Control Slides Not Included*



### Elastic, Verhoeff Stain Kit

Used to demonstrate pathologic changes in elastic fibers as well as demonstration of normal elastic tissue such as arteries and veins.

PART	VOLUME	
9116A	250ml	H
9116B	500ml	H

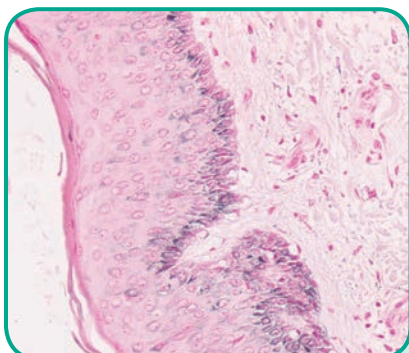


### Fat, Oil Red O, Propylene Glycol Stain Kit

Used for identification of fat/lipid in frozen sections.

PART	VOLUME	
9119A	250ml	

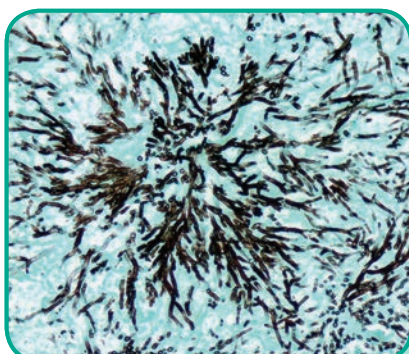
*Complimentary Control Slides Not Included*



### Fontana Masson Stain Kit

Stains argentaffin substances such as melanin, argentaffin granules of carcinoid tumors, and some neurosecretory granules.

PART	VOLUME	
9105A	250ml	H



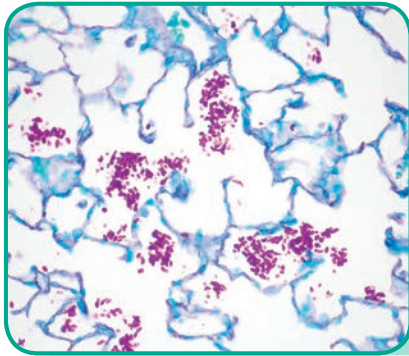
### Fungus, Grocott Methenamine Silver (GMS) Stain Kit

Stains a variety of fungal organisms including: Pneumocystis carinii, Aspergillus, Blastomyces, Candida and Histoplasma.

Microwave Modification Included

PART	VOLUME	
9121A	250ml	H
9121B	500ml	H

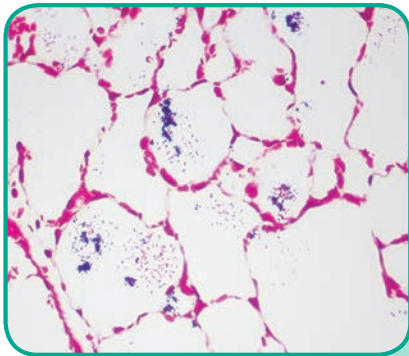
# STAIN KITS



## Fungus, PAS/Light Green Stain Kit

Stains fungus and glycoproteins. Polysaccharides present in fungal cell walls are oxidized by the periodic acid to aldehydes. The aldehydes then react with Schiff Reagent, McManus to yield magenta colored fungi.

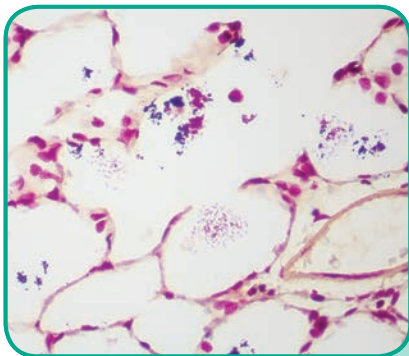
PART	VOLUME
9122A	250ml



## Gram, Brown-Brenn Modified Stain Kit

Used for differential staining of gram-positive and gram-negative bacteria in tissue sections, cultures and smears.

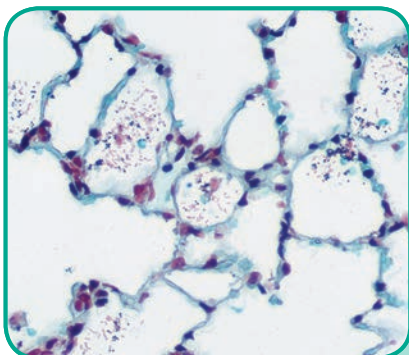
PART	VOLUME	
9123A	250ml	H



## Gram, Brown-Hopps Stain Kit

Stains gram-negative and gram-positive bacteria and uses Gallego solution to differentiate the organisms.

PART	VOLUME	
9124A	250ml	H

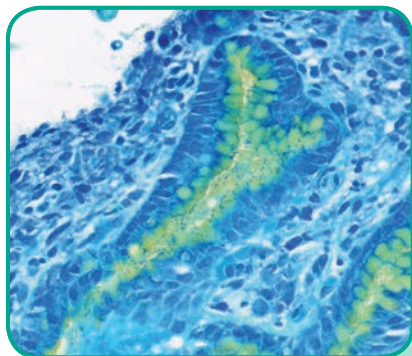


## Gram, Hucker-Twort Stain Kit

Stains gram-positive and gram-negative bacteria without the use of picric acid. The Fast Green secondary counterstain provides the green background for clear detection of any red gram-negative bacteria present.

PART	VOLUME	
9125A	250ml	H



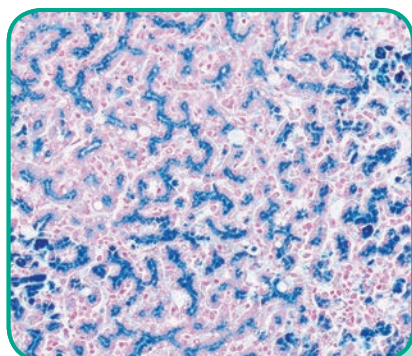


### Helicobacter, Toluidine Blue / Alcian Yellow Stain Kit

Used to screen and detect *Helicobacter pylori* in gastrointestinal biopsy specimens.

PART	VOLUME
9130A	250ml

H



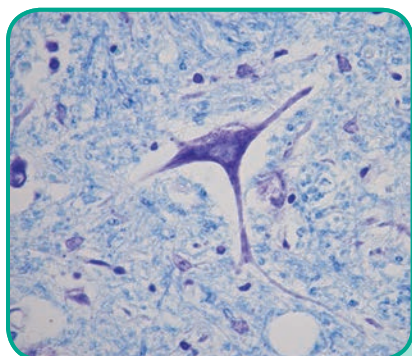
### Iron, Gomori Prussian Blue Stain Kit

Used to detect loosely bound ferric iron in tissue sections. This histochemical reaction is sensitive enough to demonstrate minute amounts of iron deposits in blood cells, bone marrow and spleen.

PART	VOLUME
9136A	250ml
9136B	500ml

H

H



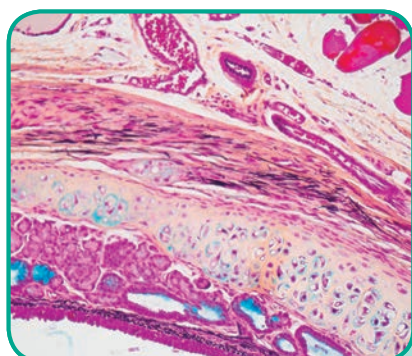
### Luxol Fast Blue (LFB) / Cresyl Violet Stain Kit

Stains myelin and Nissl substance in central nervous system tissues and in peripheral nerve.

Microwave Modification Included

PART	VOLUME
9155A	250ml

H



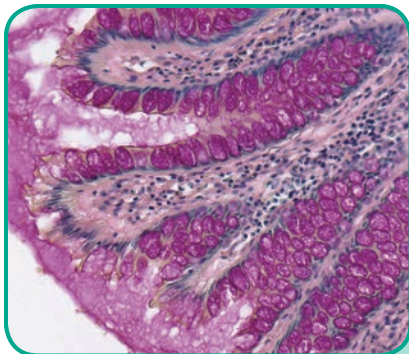
### Movat-Russell Modified Pentachrome Stain Kit

Stains five connective tissue elements; mucin, fibrin, elastic fibers, muscle, and collagen, along with nuclei.

PART	VOLUME
9150A	250ml

H

# STAIN KITS

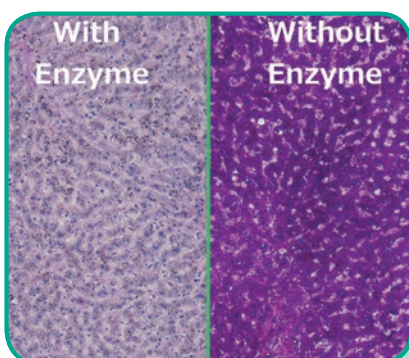


## Mucin, Mayer Mucicarmine Stain Kit

Stains acid epithelial mucin (sialomucin, sulfomucin) and is also useful for the demonstration of the encapsulated yeast *Cryptococcus neoformans*.

Microwave Modification Included

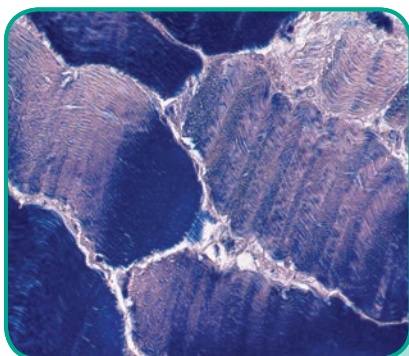
PART	VOLUME	
9151A	250ml	H
9151B	500ml	H



## Periodic Acid Schiff (PAS) Stain Kit

Stains glycoproteins and aids in the differential diagnosis of tumors through the detection of acid/neutral epithelial mucins and/or glycogen. Digestion steps can be employed for further identification of mucosubstances. Also useful for staining basement membranes and fungal cell walls.

PART	VOLUME	
9162A	250ml	H
9162B	500ml	H

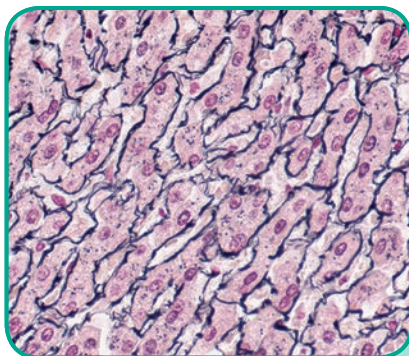


## Phosphotungstic Acid Hematoxylin (PTAH) Stain Kit

Used for the demonstration of collagen, muscle striations and central nervous system (CNS) structures. The Zenker fixative used in this procedure is modified with zinc chloride and is mercury free.

Microwave Modification Included

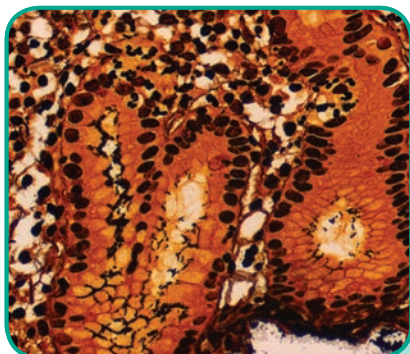
PART	VOLUME	
9111A	250ml	H



## Reticulum, Gordon & Sweets Stain Kit

A silver stain for demonstration of reticular fibers. Useful in the differential diagnosis of certain types of tumors.

PART	VOLUME	
9168A	250ml	

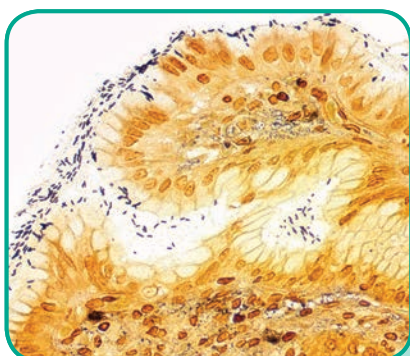


### Steiner-Chapman Modified Silver Stain Kit

Stains spirochetes, *Helicobacter pylori*, *Legionella pneumophila*, other nonfilamentous bacteria and fungus. Eliminates the use of Uranyl Nitrate.

Microwave Modification Included

PART	VOLUME	
9172A	250ml	H
9172B	500ml	H

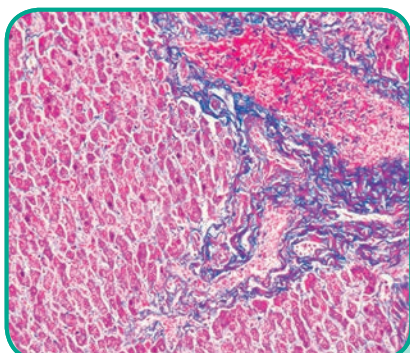


### Steiner-Steiner Modified Silver Stain Kit

A silver stain for identifying spirochetes, *Helicobacter pylori*, *Legionella pneumophila*, other nonfilamentous bacteria and fungus.

Microwave Modification Included

PART	VOLUME	
9171A	250ml	H

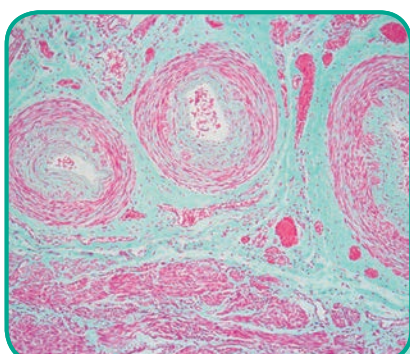


### Trichrome, Gomori One-Step, Aniline Blue Stain Kit

Uses a one-step solution combining a plasma stain and a connective tissue stain to differentially demonstrate collagen and muscle fibers.

Microwave Modification Included

PART	VOLUME	
9176B	250ml	H
9176A	500ml	H



### Trichrome, Gomori One-Step, Fast Green Stain Kit

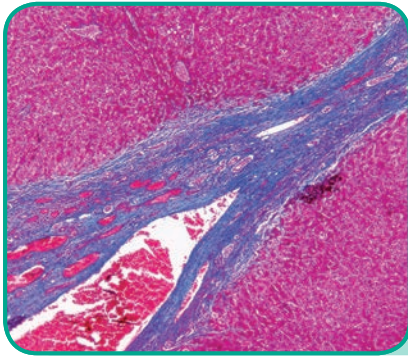
Uses a one-step solution combining a plasma stain and a connective tissue stain to differentially demonstrate collagen and muscle fibers.

Microwave Modification Included

PART	VOLUME	
9175A	250ml	H



# STAIN KITS

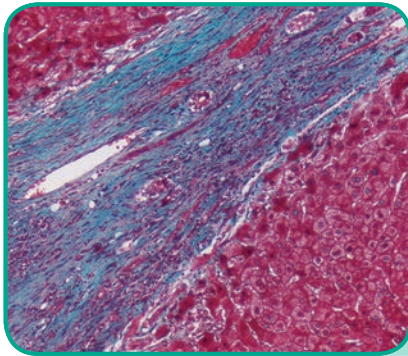


## Trichrome, Masson, Aniline Blue Stain Kit

Used to differentially demonstrate connective tissue elements, collagen and muscle fibers.

Microwave Modification Included

PART	VOLUME	
9179A	250ml	H
9179B	500ml	H

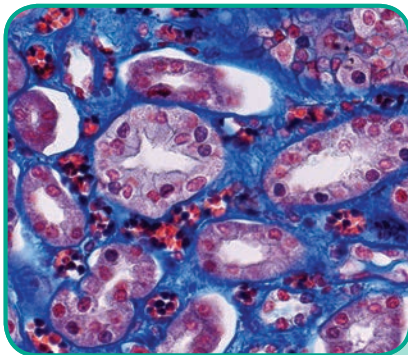


## Trichrome, Masson, Fast Green Stain Kit

Used to differentially demonstrate connective tissue elements, collagen and muscle fibers.

Microwave Modification Included

PART	VOLUME	
9180A	250ml	H



## Trichrome, McLetchie, Aniline Blue Stain Kit

Stains collagen and muscle fibers, works well on bone marrow and renal biopsies and provides time efficient results. This modified procedure does not use a Bouin Fluid mordant or a hematoxylin nuclear stain.

PART	VOLUME	
9177A	250ml	H

## AFB, BASIC FUCHSIN, ELLIS & ZABROWARNY STAIN KIT

Basic Fuchsin Stain, 1% Alcoholic  
Acid Alcohol 3%  
Methylene Blue Stain 0.25%, Aqueous

## AFB, FITE STAIN KIT

Xylene/Peanut Oil, 2:1  
Carbol Fuchsin Stain, Ziehl-Neelsen  
Sufuric Acid 1%, Aqueous  
Methylene Blue Stain 0.5%, Aqueous

## AFB, ZIEHL-NEELSEN STAIN KIT

Carbol Fuchsin Stain, Ziehl-Neelsen  
Acid Alcohol 1%  
Light Green SF Yellowish Stain 0.1%, Aqueous

## ALCIAN BLUE 1%, PH 2.5 STAIN KIT

Acetic Acid 3%, Aqueous  
Alcian Blue Stain 1%, pH 2.5 Aqueous  
Nuclear Fast Red Stain, Kernechtrot

## ALCIAN BLUE/PAS STAIN KIT

Acetic Acid 3%, Aqueous  
Alcian Blue Stain 1%, pH 2.5 Aqueous  
Periodic Acid 0.5%, Aqueous  
Schiff Reagent, McManus  
Hematoxylin Stain, Mayer Modified

## AMYLOID, BENNHOLD CONGO RED STAIN KIT

Congo Red Stain 1%, Aqueous (Set Part A)  
Alkaline Alcohol (Set Part B)  
Hematoxylin Stain, Mayer Modified

## AMYLOID, PUCHTLER CONGO RED STAIN KIT

Hematoxylin Stain, Harris Modified  
Sodium Hydroxide 1%, Aqueous (Set Part A)  
Congo Red Stain, Alcoholic (Set Part B)

## BASEMENT MEMBRANE, GOMORI STAIN KIT

Methenamine 3%, Aqueous (Set Part A)  
Silver Nitrate 5%, Aqueous (Set Part B)  
Sodium Borate 5%, Aqueous (Set Part C)  
Periodic Acid 1%, Aqueous  
Gold Chloride 0.25%, Aqueous  
Sodium Thiosulfate 2.5%, Aqueous  
Light Green SF Yellowish Stain 0.1%, Aqueous

## BIELSCHOWSKY, LESTER-KING MODIFIED STAIN KIT

Silver Nitrate 20%, Aqueous  
Ammonium Hydroxide 28-30%, ACS  
Developer  
Sodium Thiosulfate 5%, Aqueous

## COLLOIDAL IRON, MÜLLER-MOWRY STAIN KIT

Acetic Acid 12%, Aqueous  
Colloidal Iron Stock  
Acetic Acid, Glacial, ACS  
Potassium Ferrocyanide 2%, Aqueous  
Hydrochloric Acid 2%, Aqueous  
Van Gieson Stain

## COPPER, RHODANINE STAIN KIT

Rhodanine Stock Stain 0.2%, Alcoholic  
Hematoxylin Stain, Mayer Modified  
Sodium Borate 0.5%, Aqueous

## DIFFERENTIAL STAIN KIT

Xanthene Stain  
Thiazine Stain  
Fixative

## ELASTIC, VERHOEFF STAIN KIT

Hematoxylin 5%, Alcoholic  
Ferric Chloride 10%, Aqueous  
Iodine, Weigert & Lugol, Aqueous  
Sodium Thiosulfate 5%, Aqueous  
Van Gieson Stain

## FAT, OIL RED O, PROPYLENE GLYCOL STAIN KIT

Propylene Glycol 100%, ACS  
Oil Red O Stain, Propylene Glycol  
Propylene Glycol 85%, Aqueous  
Hematoxylin Stain, Mayer Modified

## FONTANA MASSON STAIN KIT

Silver Nitrate 10%, Aqueous  
Ammonium Hydroxide 28-30%, ACS  
Gold Chloride 0.2%, Aqueous  
Sodium Thiosulfate 5%, Aqueous  
Nuclear Fast Red Stain, Kernechtrot

# COMPONENT LIST

## FUNGUS, GROCOTT METHENAMINE SILVER (GMS) STAIN KIT

Chromic Acid 5%, Aqueous  
Sodium Bisulfite 1%, Aqueous  
Silver Nitrate (Set Part A)  
Methenamine Borate (Set Part B)  
Gold Chloride 0.1%, Aqueous  
Sodium Thiosulfate 2%, Aqueous  
Light Green SF Yellowish Stain 0.02%, Aqueous

## FUNGUS, PAS/LIGHT GREEN STAIN KIT

Periodic Acid 0.5%, Aqueous  
Schiff Reagent, McManus  
Light Green SF Yellowish Stain 0.1%, Aqueous

## GRAM, BROWN-BRENN MODIFIED STAIN KIT

Crystal Violet-Oxalate Stain, Alcoholic  
Iodine, Gram, Aqueous  
Acetone-Alcohol 1:1  
Basic Fuchsin Stain 0.25%, Aqueous  
Picric Acid-Acetone 0.1%  
Acetone-Xylene 1:1

## GRAM, BROWN-HOPPS STAIN KIT

Crystal Violet Stain 1%, Aqueous, Brown-Hopps  
Iodine, Gram, Aqueous  
Basic Fuchsin Stain 0.25%, Aqueous  
Gallego Solution  
Picric Acid-Acetone 0.05%  
Acetone-Xylene 1:1

## GRAM, HUCKER-TWORT STAIN KIT

Crystal Violet-Oxalate Stain, Alcoholic  
Iodine, Weigert & Lugol, Aqueous  
Neutral Red Stain 1%, Alcoholic (Set Part A)  
Fast Green Stain 1%, Alcoholic (Set Part B)

## HELICOBACTER, TOLUIDINE BLUE/ALCIAN YELLOW STAIN KIT

Periodic Acid 1%, Aqueous  
Sodium Metabisulfite 5%, Aqueous  
Alcian Yellow Stain 1%, Alcoholic  
Toluidine Blue Stock Stain 1%, Aqueous  
Sodium Hydroxide 3%, Aqueous

## IRON, GOMORI PRUSSIAN BLUE STAIN KIT

Hydrochloric Acid 20%, Aqueous  
Potassium Ferrocyanide 10%, Aqueous  
Nuclear Fast Red Stain, Kernechtrot

## LUXOL FAST BLUE (LFB)/CRESYL VIOLET STAIN KIT

Luxol Fast Blue Stain 0.1%, Alcoholic  
Lithium Carbonate 0.5%, Aqueous  
Cresyl Violet Stain, Aqueous  
Acetic Acid 10%, Aqueous

## MOVAT-RUSSELL MODIFIED PENTACHROME STAIN KIT

Alcian Blue Stain 1%, Aqueous  
Ammonium Hydroxide 28-30%, ACS  
Hematoxylin 10%, Alcoholic  
Ferric Chloride 10%, Aqueous  
Iodine, Verhoeff, Aqueous  
Ferric Chloride 2%, Aqueous  
Sodium Thiosulfate 5%, Aqueous  
Crocein Scarlet 7B Stain, Aqueous  
Acid Fuchsin Stain, Aqueous  
Phosphotungstic Acid 5%, Aqueous  
Orange G Stain 1%, Aqueous  
Acetic Acid 0.5%, Aqueous

## MUCIN, MAYER MUCICARMINE STAIN KIT

Ferric Chloride, Acidified (Set Part A)  
Hematoxylin 1%, Alcoholic (Set Part B)  
Mucicarmine Stock Stain, Mayer  
Metanil Yellow Stain, Aqueous

## PERIODIC ACID SCHIFF (PAS) STAIN KIT

Periodic Acid 0.5%, Aqueous  
Schiff Reagent, McManus  
Hematoxylin Stain, Harris  
Acid Alcohol 1%  
Lithium Carbonate, Saturated Aqueous

## PHOSPHOTUNGSTIC ACID HEMATOXYLIN (PTAH) STAIN KIT

Zenker Fixative, Modified, Zinc Chloride  
Acetic Acid, Glacial, ACS  
Potassium Permanganate 0.25%, Aqueous  
Oxalic Acid 5%, Aqueous  
Phosphotungstic Acid Hematoxylin (PTAH) Stain, Modified Mallory





### RETICULUM, GORDON & SWEETS STAIN KIT

Potassium Permanganate 1%, Aqueous  
 Oxalic Acid 1%, Aqueous  
 Ferric Ammonium Sulfate 2.5%, Aqueous  
 Silver Nitrate 10%, Aqueous  
 Ammonium Hydroxide 28-30%, ACS  
 Sodium Hydroxide 3%, Aqueous  
 Formalin 10%, Aqueous  
 Gold Chloride 0.2%, Aqueous  
 Sodium Thiosulfate 5%, Aqueous  
 Nuclear Fast Red Stain, Kernechtrot

### STEINER-CHAPMAN MODIFIED SILVER STAIN KIT

Zinc Formalin Sensitizer  
 Silver Nitrate 1%, Aqueous  
 Gum Mastic 2.5%, Alcoholic  
 Hydroquinone, Powder

### STEINER-STEINER MODIFIED SILVER STAIN KIT

Uranyl Nitrate 1%, Aqueous  
 Silver Nitrate 1%, Aqueous  
 Gum Mastic 2.5%, Alcoholic  
 Hydroquinone, Powder

### TRICHROME, GOMORI ONE-STEP, ANILINE BLUE STAIN KIT

Bouin Fluid  
 Ferric Chloride, Acidified (Set Part A)  
 Hematoxylin 1%, Alcoholic (Set Part B)  
 Trichrome Stain, Gomori One-Step, Aniline Blue  
 Acetic Acid 0.5%, Aqueous

### TRICHROME, GOMORI ONE-STEP, FAST GREEN STAIN KIT

Bouin Fluid  
 Ferric Chloride, Acidified (Set Part A)  
 Hematoxylin 1%, Alcoholic (Set Part B)  
 Trichrome Stain, Gomori One-Step, Fast Green  
 Acetic Acid 0.5%, Aqueous

### TRICHROME, MASSON, ANILINE BLUE STAIN KIT

Bouin Fluid  
 Ferric Chloride, Acidified (Set Part A)  
 Hematoxylin 1%, Alcoholic (Set Part B)  
 Biebrich Scarlet-Acid Fuchsin Stain, Aqueous  
 Phosphomolybdic-Phosphotungstic Acid, Aqueous  
 Aniline Blue Stain, Aqueous  
 Acetic Acid 0.5%, Aqueous

### TRICHROME, MASSON, FAST GREEN STAIN KIT

Bouin Fluid  
 Ferric Chloride, Acidified (Set Part A)  
 Hematoxylin 1%, Alcoholic (Set Part B)  
 Biebrich Scarlet-Acid Fuchsin Stain, Aqueous  
 Phosphotungstic Acid 5%, Aqueous  
 Fast Green Stain 2.5%, Aqueous  
 Acetic Acid 0.5%, Aqueous

### TRICHROME, MCLEITCHIE, ANILINE BLUE STAIN KIT

Biebrich Scarlet-Acid Fuchsin Stain, Aqueous  
 Iodine, Weigert & Lugol, Aqueous  
 Phosphotungstic Acid 2%, Alcoholic  
 Aniline Blue Stain, Aqueous



2505 Parview Road • Middleton, WI 53562-2579 • 800-383-7799

[www.newcomersupply.com](http://www.newcomersupply.com)